

NUCLEAR MEDICINE DIVISION

Main Entrance of Cantonal Hospital building

Building C (orange) – 1st floor – right wing

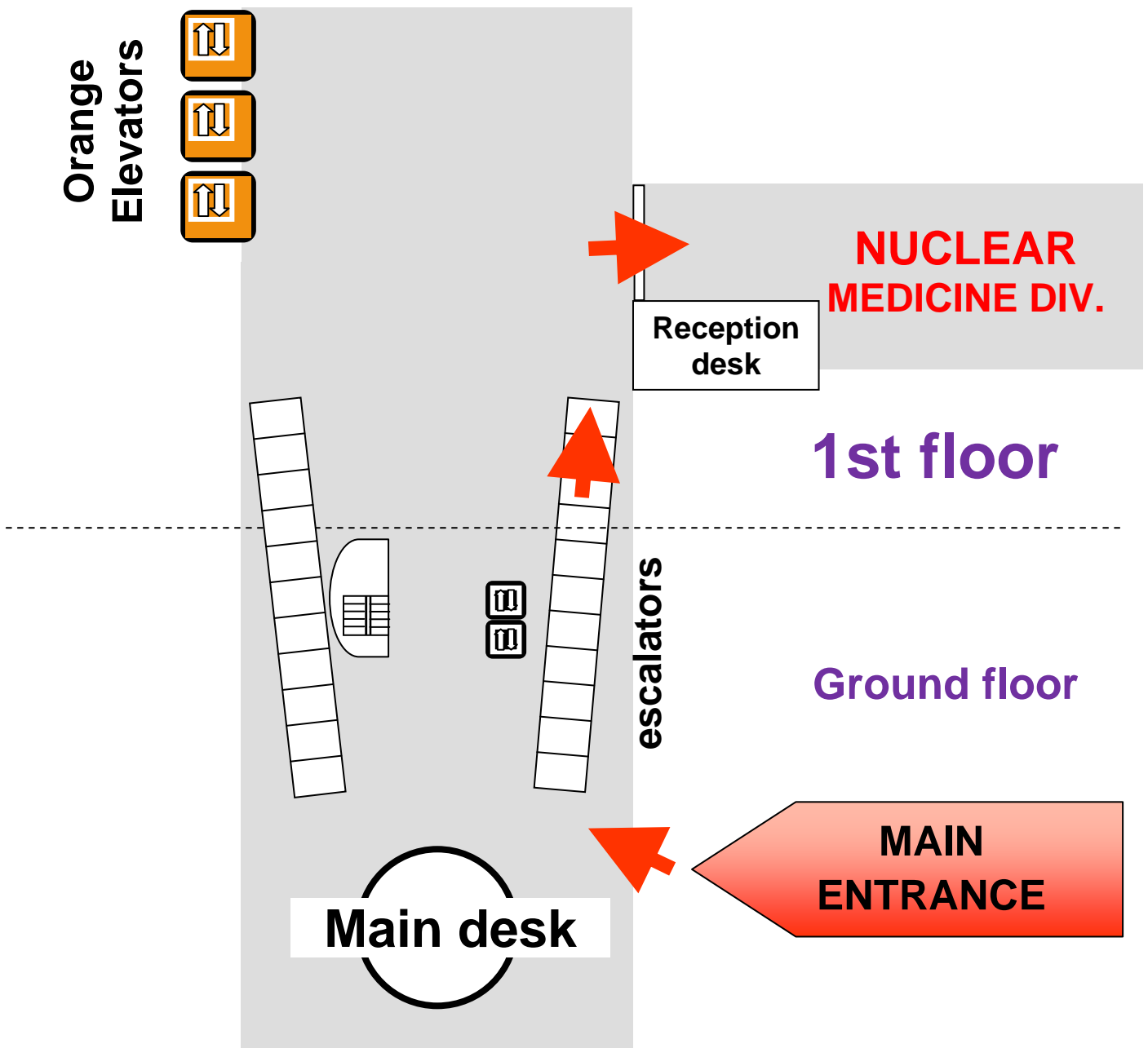
Tel +41 (0)22 372 71 44 reception desk

Tel +41 (0)22 372 71 56 private practitioners line

Fax +41(0)22 372 71 69 fax

Phone : Monday to Friday 8:00 – 17:00

Desk opening hours: Monday to Friday 7h45-17h00



Hôpitaux Universitaires de Genève –Cluses-Roseraie building

Street : 4, rue Gabrielle-Perret-Gentil, 1211 Genève 14

Tel. 022 372 33 11



Parking Lombard public et payant



bus n°1, 5, 7, 35