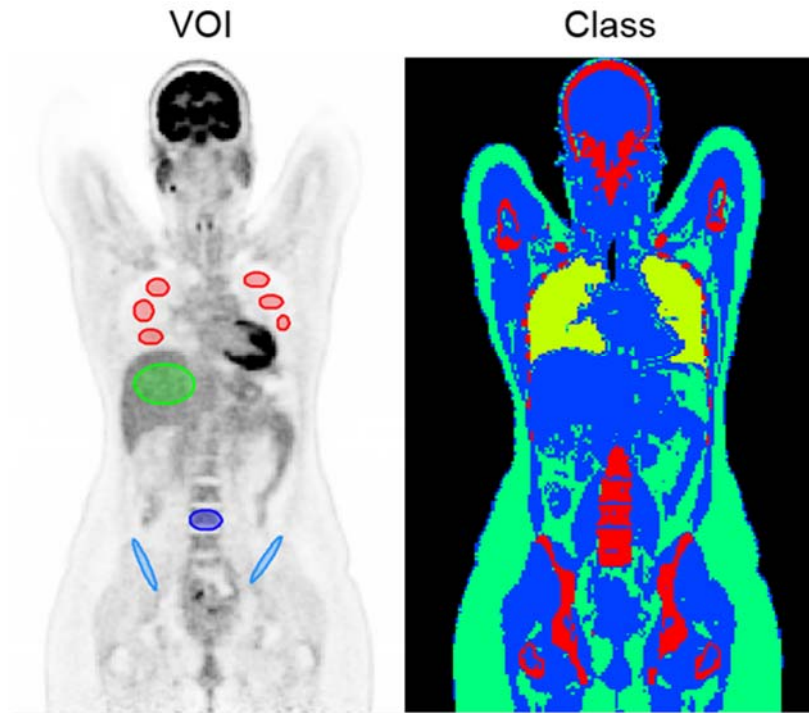
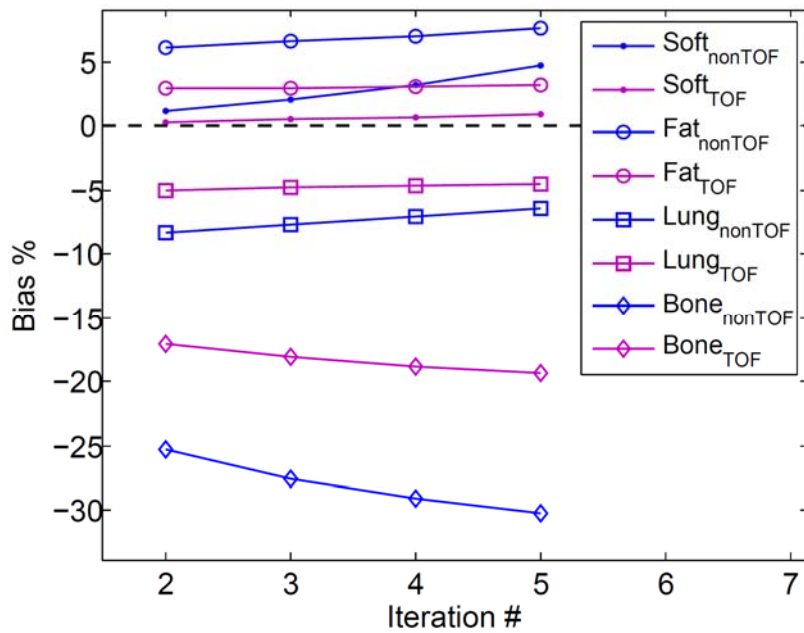


SUPPLEMENTAL FIGURE 1. Comparison between attenuation maps derived from segmenting the CT and Dixon MR images into 4 tissue class attenuation maps of a patient who underwent both PET/CT and PET/MR examinations.



SUPPLEMENTAL FIGURE 2. Illustration of VOIs defined on organs with normal tracer uptake (shown here for lungs, liver, L4, and pelvis) and the defined four different tissue classes (fat, soft tissue, lungs, and bones).



SUPPLEMENTAL FIGURE 3. PET quantification errors in non-TOF and TOF MRAC methods in different tissues classes as a function of iteration number in a single patient dataset.