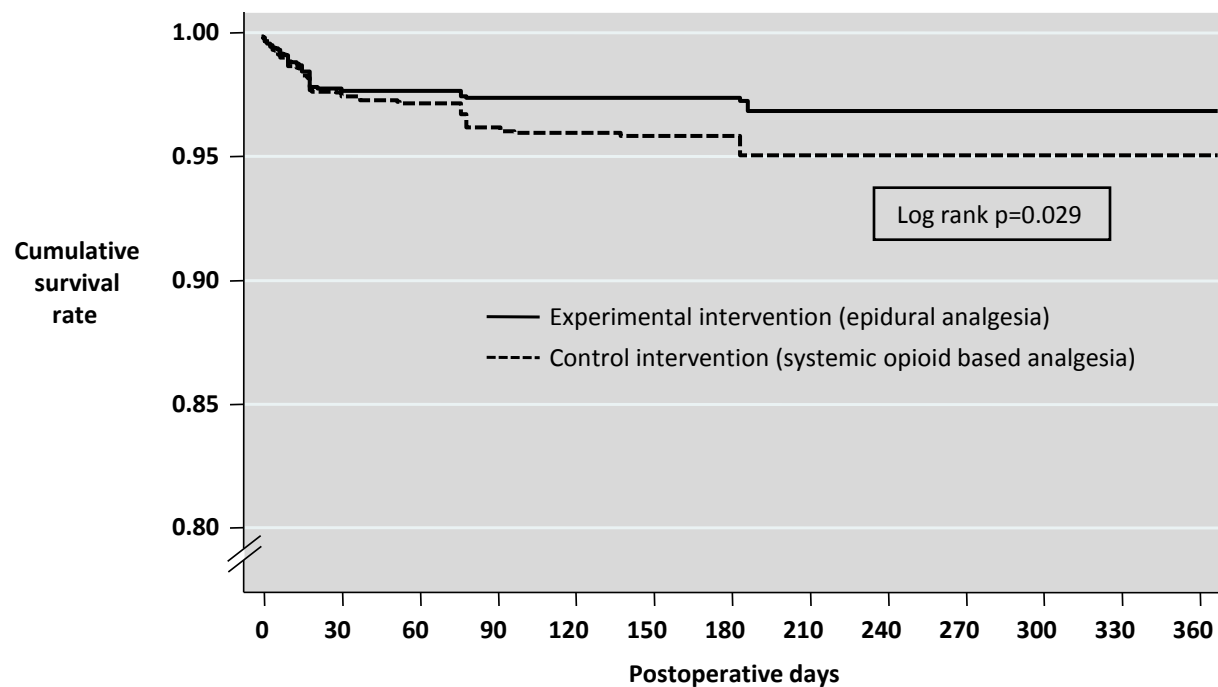


Supplemental Figure D. Kaplan-Meier survival estimates. Published and unpublished data.



Patients at risk (number of deaths)

	0-60 d	60-120 d	120-180 d	180-240 d	240-300 d	300-360 d
Control	3855 (79)	1308 (14)	1132 (3)	714 (0)	399 (0)	399 (0)
Epidural	3911 (68)	1368 (2)	1209 (1)	785 (0)	448 (0)	448 (0)

The figure shows the **second** scenario as described in the methods section (i.e. assuming that all deaths occurred in the middle of the observation period). Data from one trial with a follow-up of 12 to 15 years were not included since the exact time points of deaths were not known and an extrapolation seemed inappropriate.