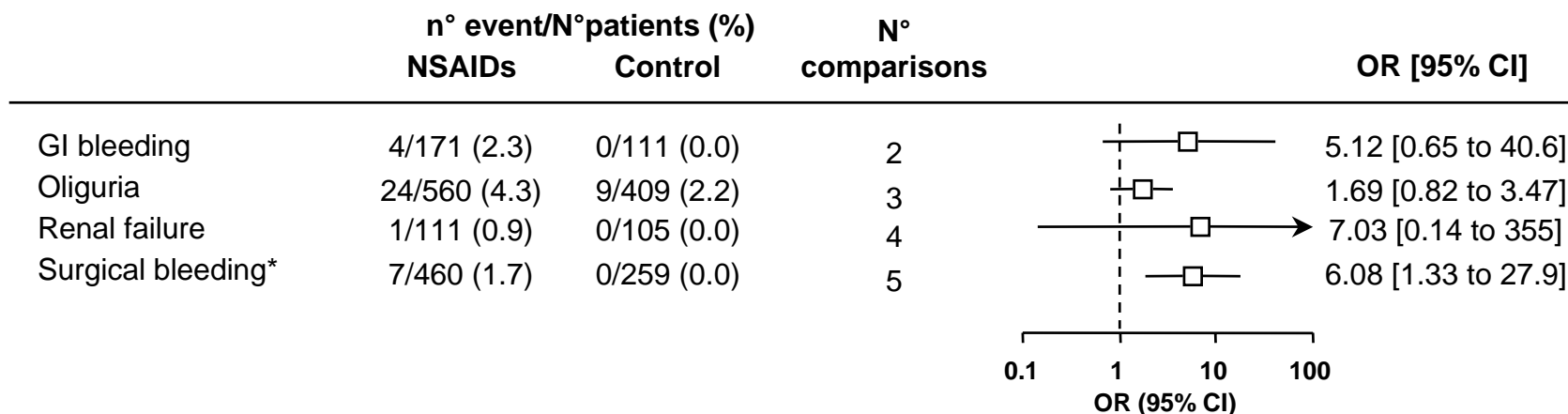


## Adverse effects related to non-steroidal anti-inflammatory drugs



OR: odds ratio. CI: confidence interval. An OR >1 indicates more drug-related adverse effects with active compared with placebo. \*Reoperation due to bleeding, transfusion required, severe postoperative hemorrhage. NSAIDs: non-steroidal anti-inflammatory drugs. GI: gastro-intestinal. Meta-analyses were performed when data from at least 3 trials or more than 100 patients could be combined. Individual trial data for each meta-analysis are available on <http://www.hcuge.ch/anesthesie/data.htm>.