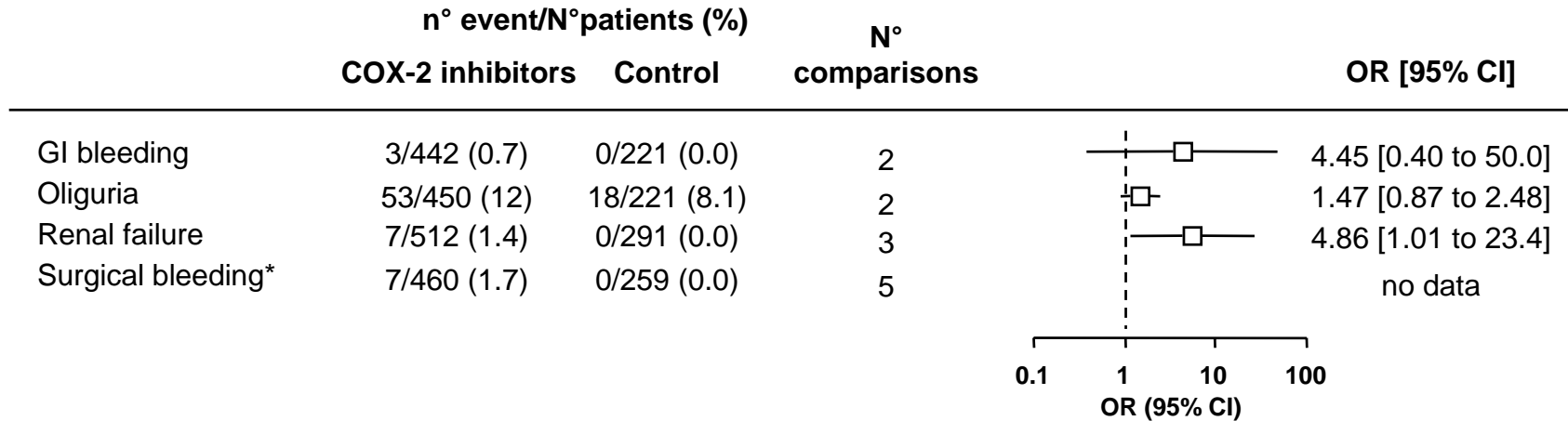


Adverse effects related to selective cyclo-oxygenase 2 inhibitors



OR: odds ratio. CI: confidence interval. An OR >1 indicates more drug-related adverse effects with active compared with placebo. *Reoperation due to bleeding, transfusion required, severe postoperative hemorrhage. GI: gastro-intestinal. Meta-analyses were performed when data from at least 3 trials or more than 100 patients could be combined. Individual trial data for each meta-analysis are available on <http://www.hcuge.ch/anesthesie/data.htm>.