

# The Geneva Sustainability Centre

Powered by the IHF

*Sonia Roschnik*  
Executive Director

Hospitals become *leaders for* ”  
*sustainability in their communities*

# The Geneva Sustainability Centre

Powered by the IHF



- Established in 2022 by the [International Hospital Federation](#), the [Geneva Sustainability Centre](#) supports hospitals and healthcare services to **address the sustainability challenges** of today and tomorrow.
- We will **equip current and future hospital leaders** with the information, tools, and skills to drive this sustainable transformation at leadership, management, and institutional levels.
- Our **vision** is to support hospitals to become leaders for sustainability in their communities.
- Our **mission** is to equip hospital leaders with the information, tools, and skills to deliver a net positive impact for a healthy and resilient future.



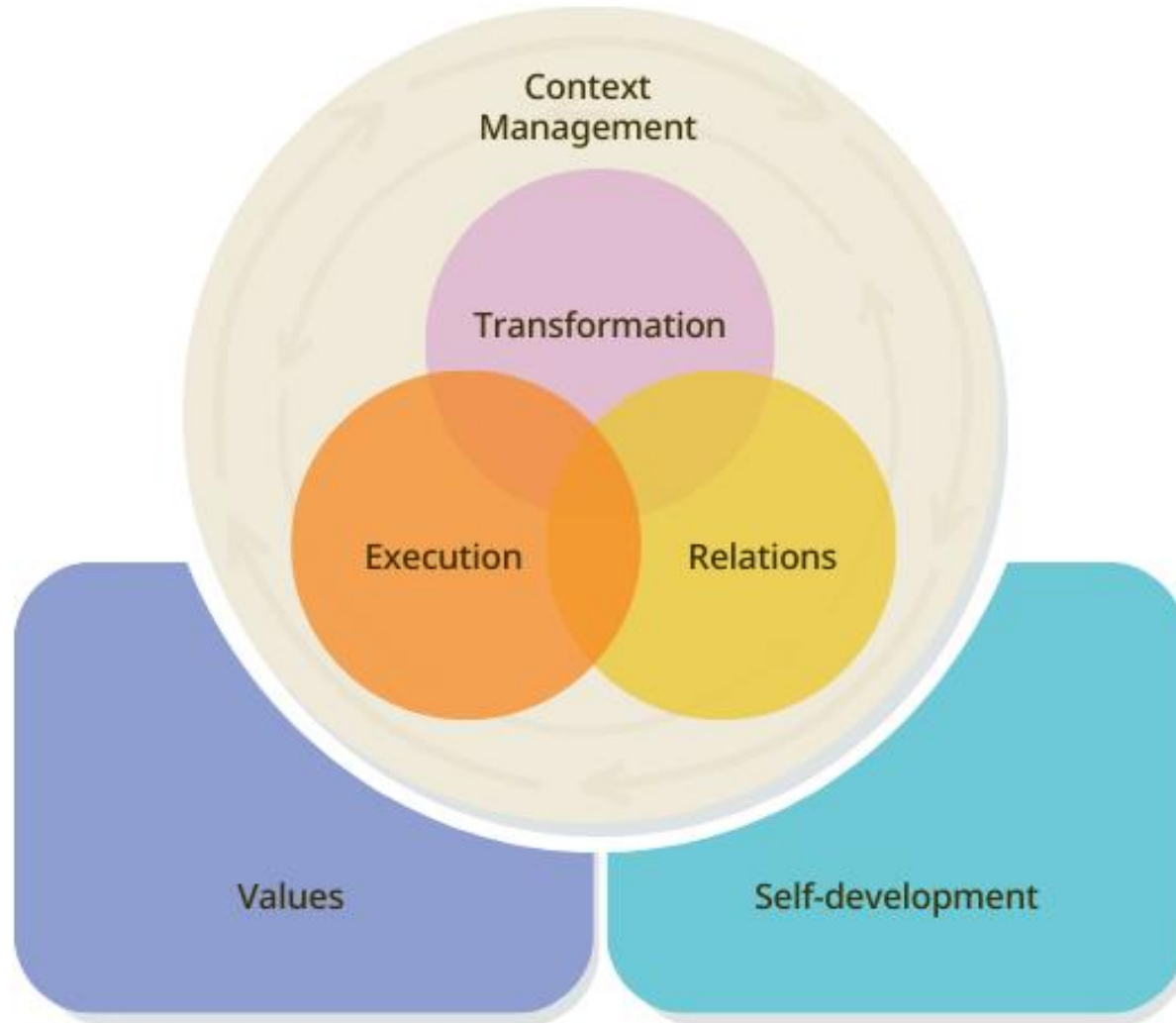
International  
Hospital  
Federation



Addressing climate  
change as an integral  
part of healthcare  
delivery

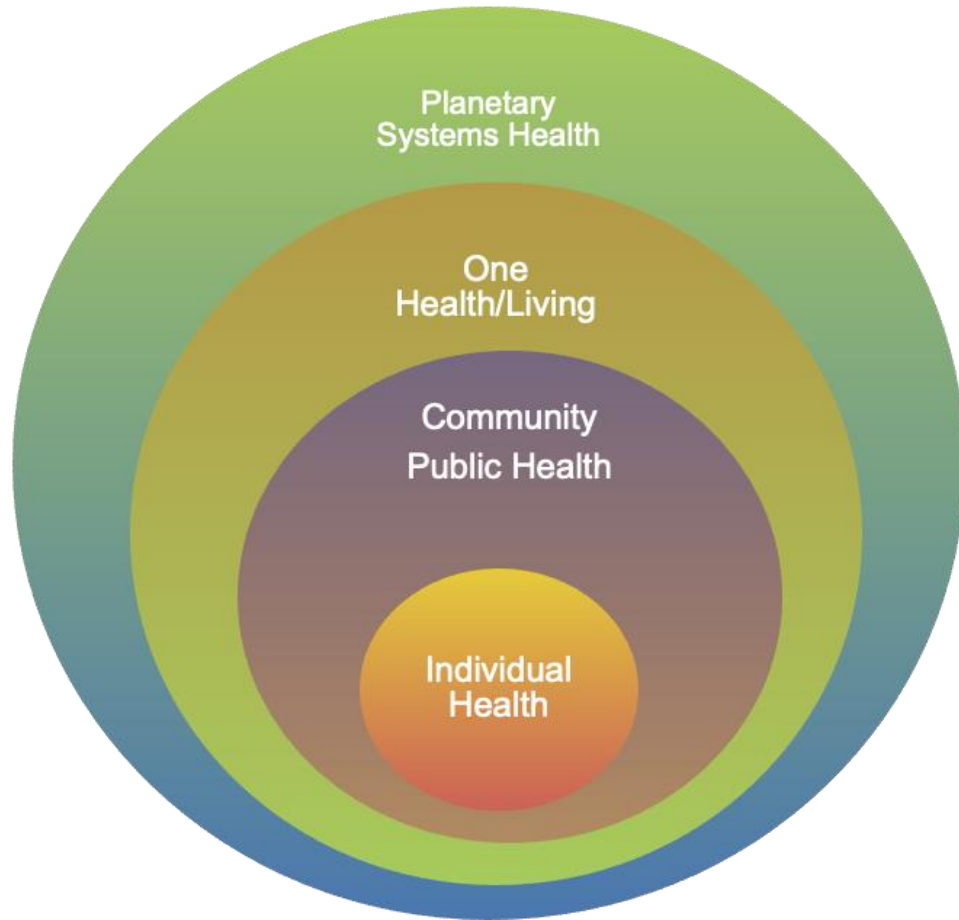
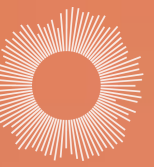
# IHF Leadership Competencies

## *Global Healthcare Competency Model for Future-ready Leadership*

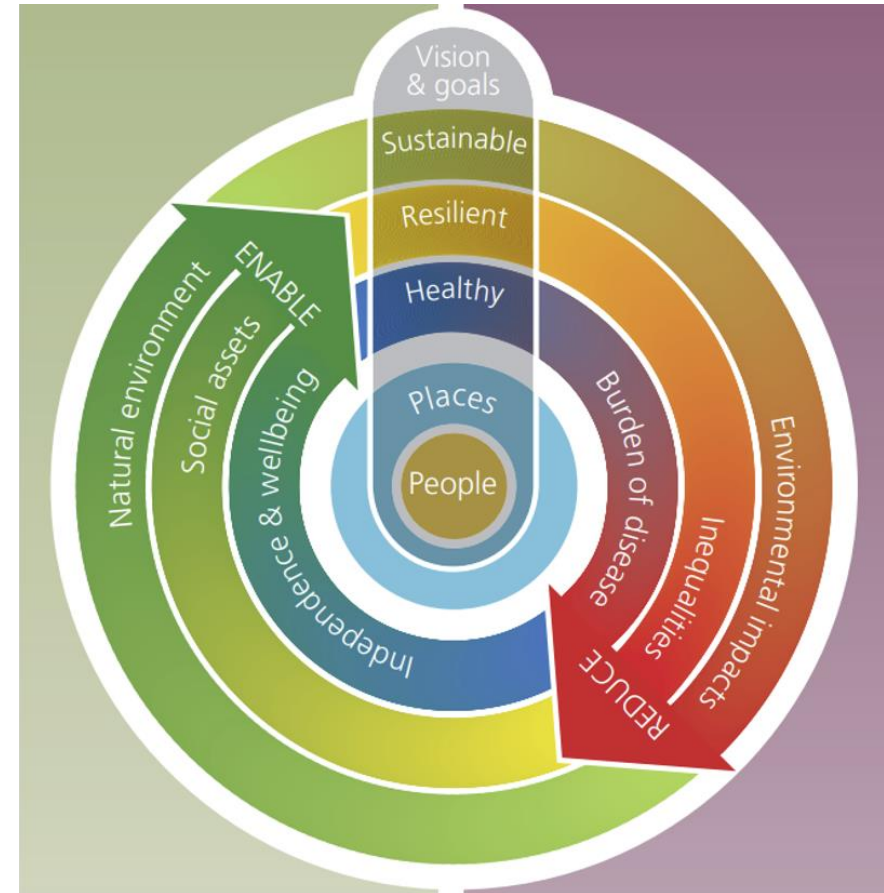


- VALUES**  
Defined personal, professional, and organizational guiding principles to inform decision-making. Provide a shared sense of responsibility throughout the organization.
- SELF-DEVELOPMENT**  
Combined efforts to manage oneself as a resource and to continue learning and improving.
- EXECUTION**  
Clarifying, implementing, and monitoring the shared direction of action, and strengthening the existing structures and process as needed.
- RELATIONS**  
Listening, understanding and supporting the individual needs of the people one works with, and being able to inspire and have a positive influence on others.
- CONTEXT MANAGEMENT**  
Managing across one's sphere of influence, both within the hospital walls and beyond the organization.
- TRANSFORMATION**  
Leading systemic changes and advancing healthcare services based on need, common vision, and trust.

# Planetary and Health Systems

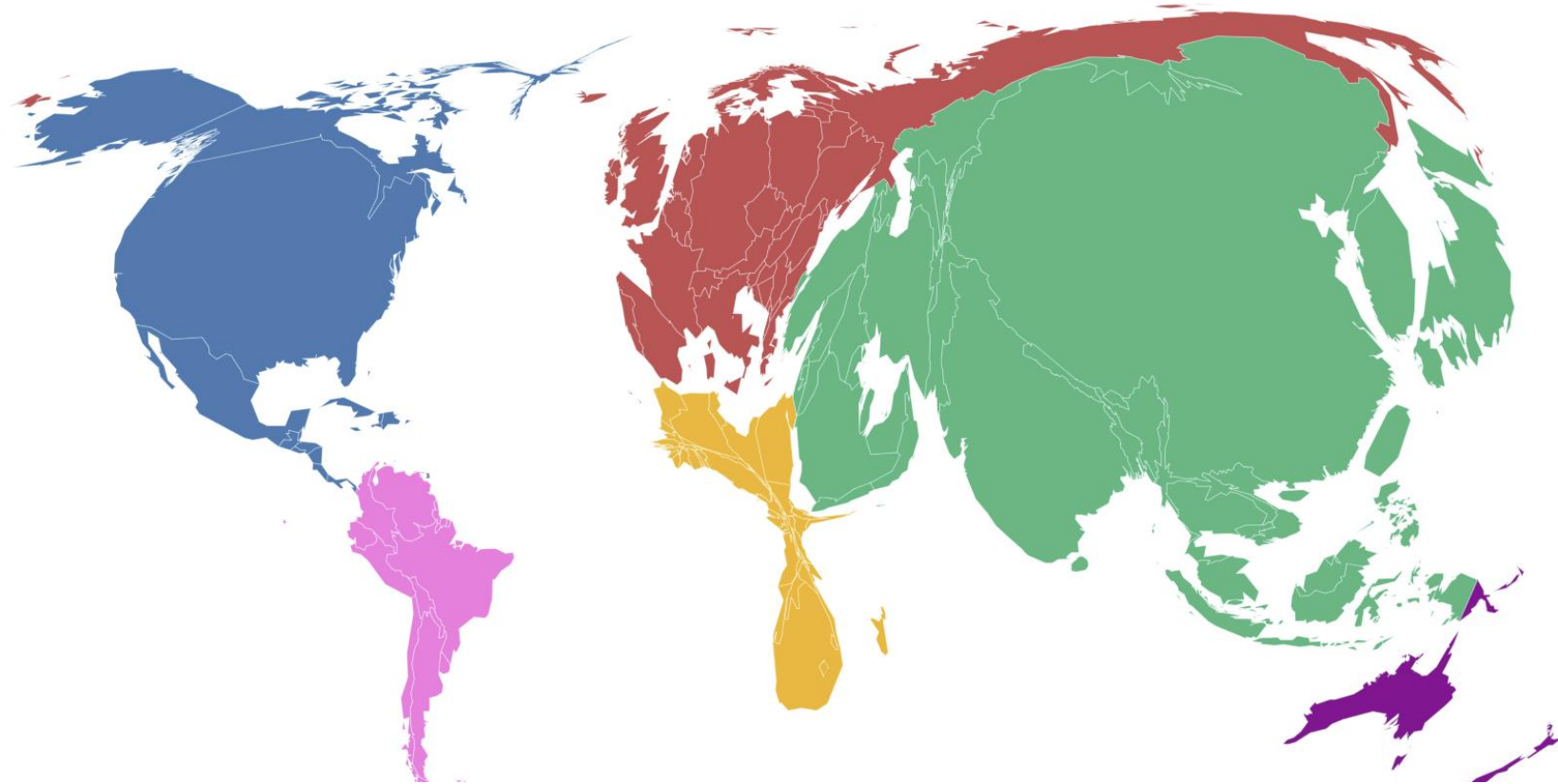
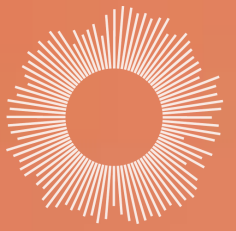


Derived from Forbes 2021:  
What is Planetary Health?

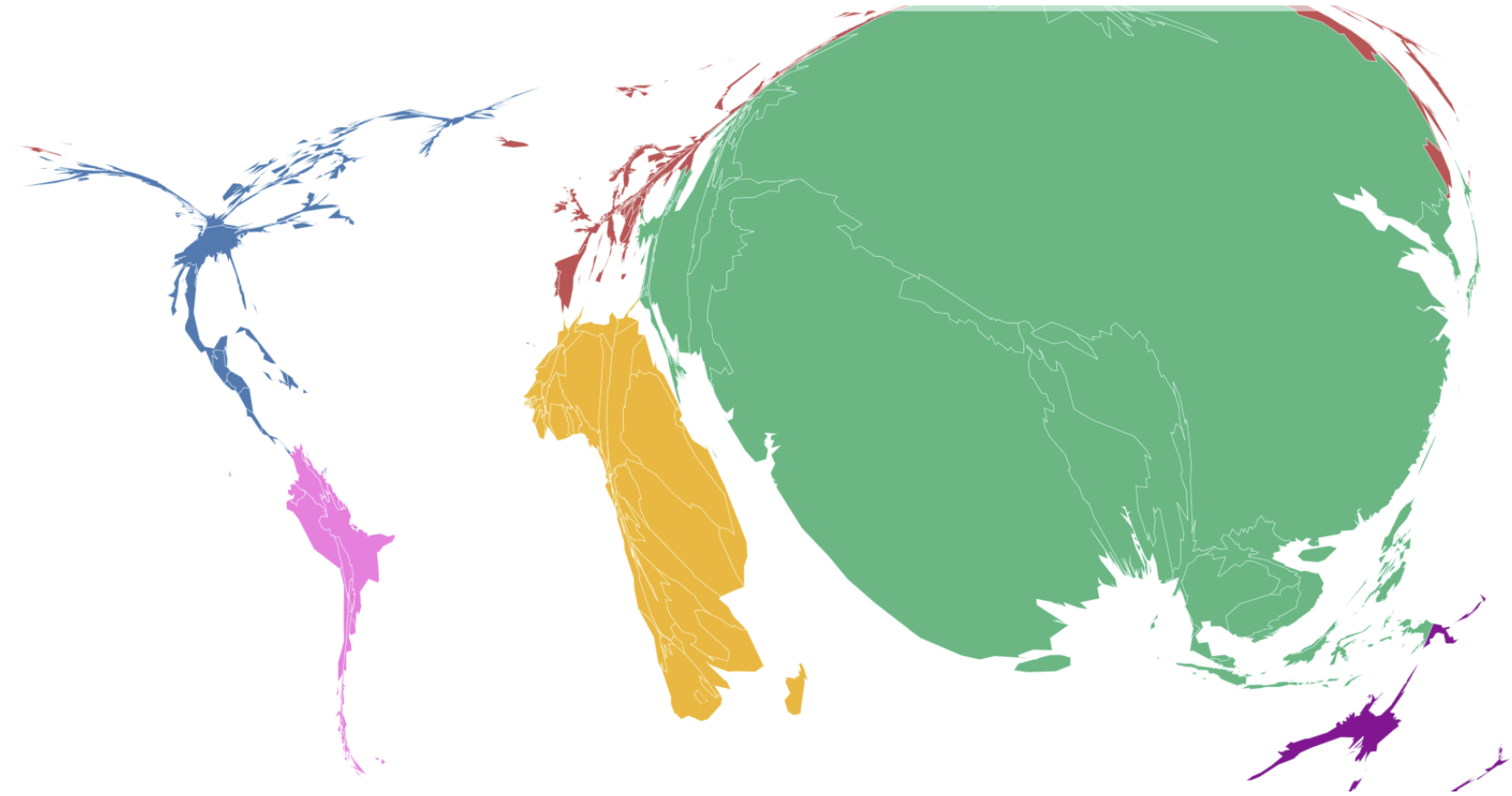
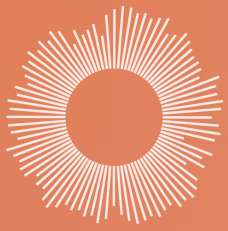


NHS Sustainable Development Unit 2015:  
Sustainable Development Strategy

# World Emissions



# Global Vulnerabilities





# Health benefits far outweigh the costs of meeting climate change goals

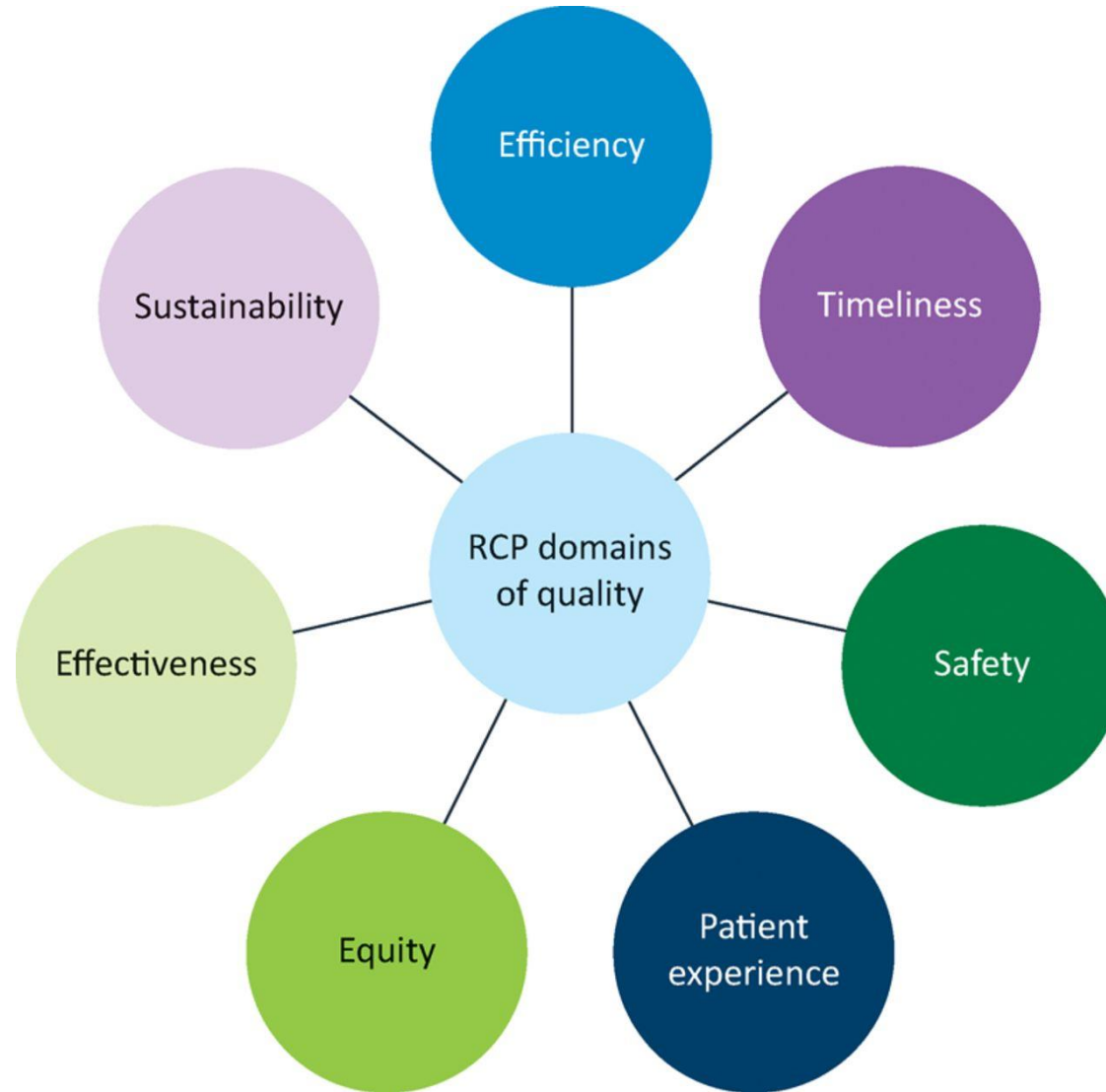
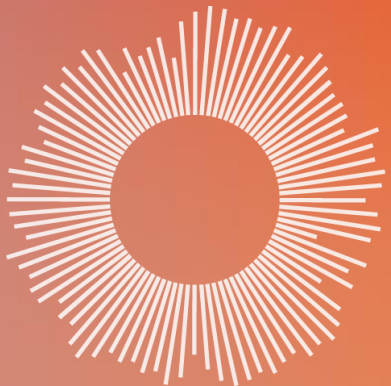
5 December 2018 | News Release | Katowice, Poland

**“The health burden of polluting energy sources is now so high, that moving to cleaner and more sustainable choices for energy supply, transport and food systems effectively pays for itself,”** says Dr Maria Neira, WHO Director of Public Health, Environmental and Social Determinants of Health.

**“When health is taken into account, climate change mitigation is an opportunity, not a cost.”**

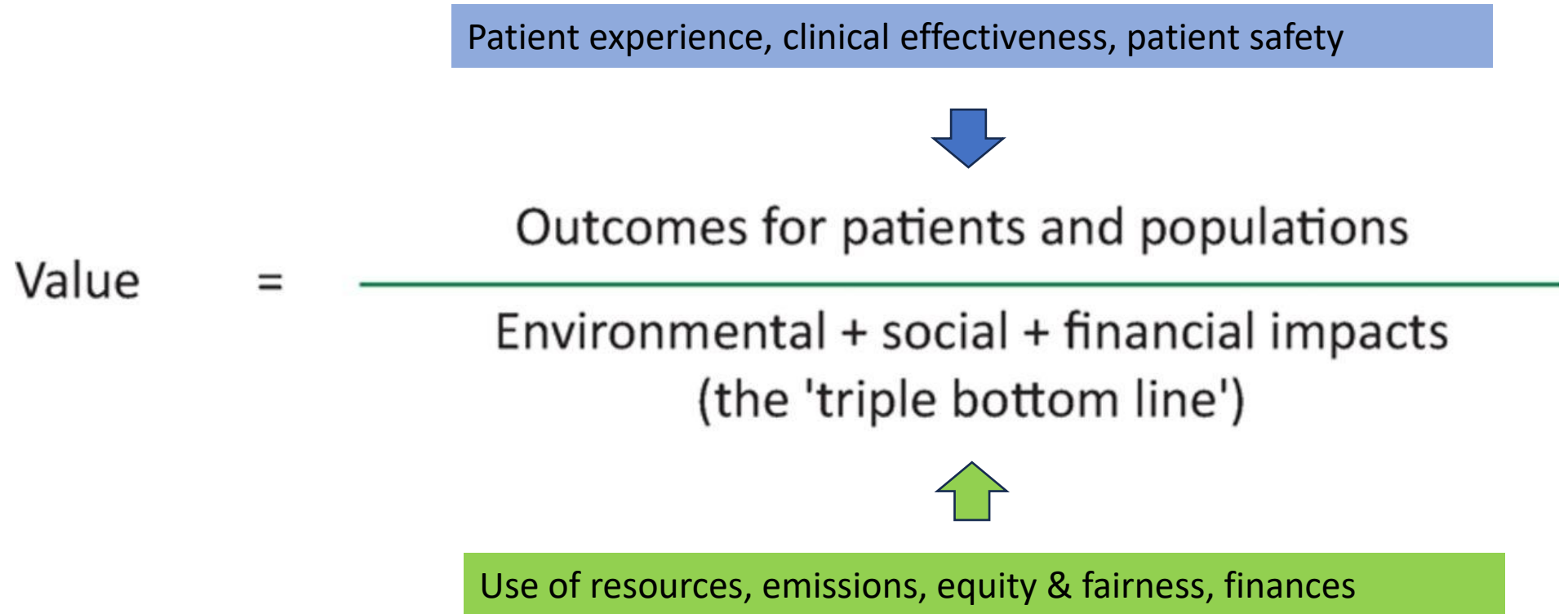
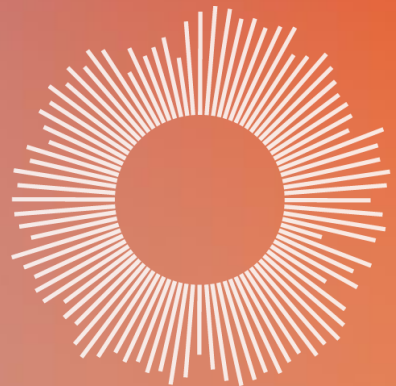


# Quality of care

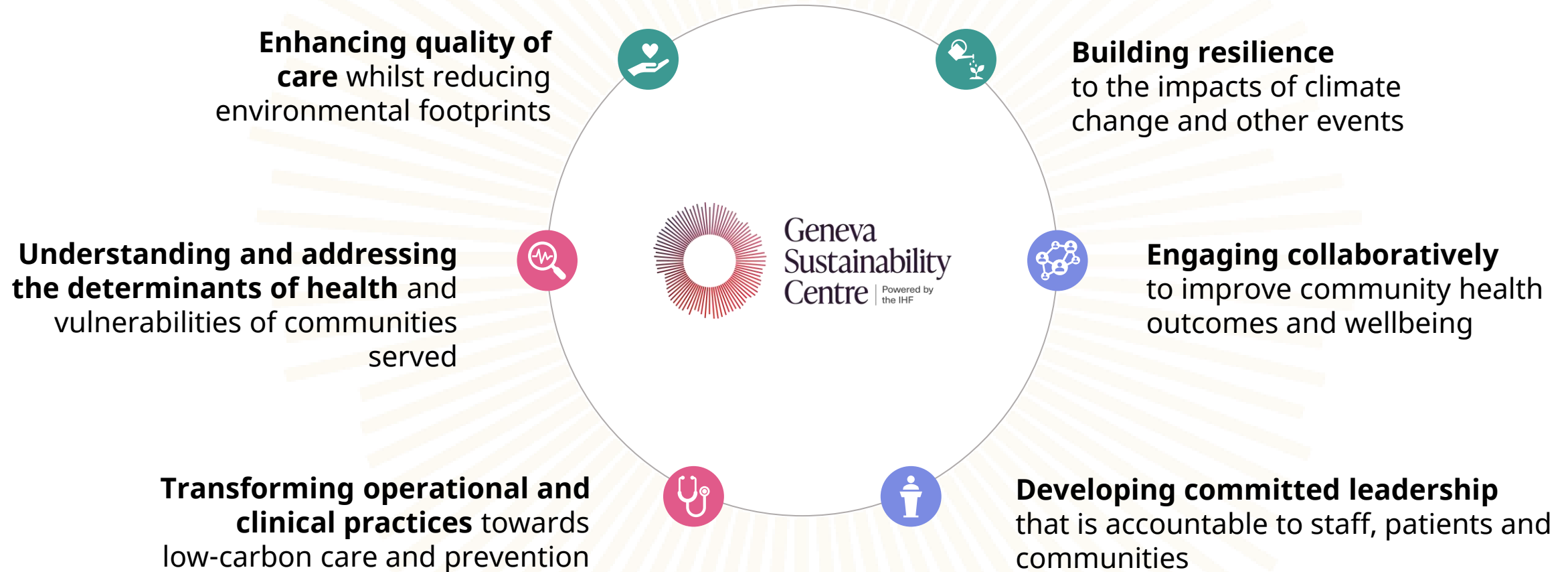


**Domains of quality** (adapted by the Royal College of Physicians from the Institute of Medicine).<sup>1</sup>

# Value of Care



# Low carbon, equitable and resilient healthcare



# The Sustainability Accelerator Tool



## 1. Environmental Impact

Refers to efforts to:

- Reduce the environmental footprint of your organization and ecosystem
- Build resilience to climate change impacts
- Incorporate low-carbon care through operational services and clinical practice.

## 2. Health, Equity and Wellbeing

Includes efforts to:

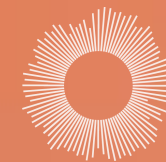
- Assess the vulnerabilities in communities to better target services
- Deliver health and prevention services in an equity-based way that support mental and physical wellbeing
- Prevent ill health and positively influence environmental and social determinants of health.

## 3. Governance and Leadership

Encompasses efforts to:

- Ensure structures and practices are in place to promote leadership accountability and reporting
- Engage and empower employees to act on sustainability issues
- Act on sustainability issues in a collaborative way across communities and with relevant stakeholders.

# The Assessment Framework



## 1) Environmental Impact

1.1)	Organizational Maturity
1.2)	Use Of Environmental Resources
1.3)	Procurement And Supply Chain Management
1.4)	Environmental Impact Analytics And Reporting
1.5)	Infrastructure And Service Resilience
1.6)	Low-carbon Care: Clinical Practices
1.7)	Low-carbon Care: Operational Services



## 2) Health, Equity & Wellbeing

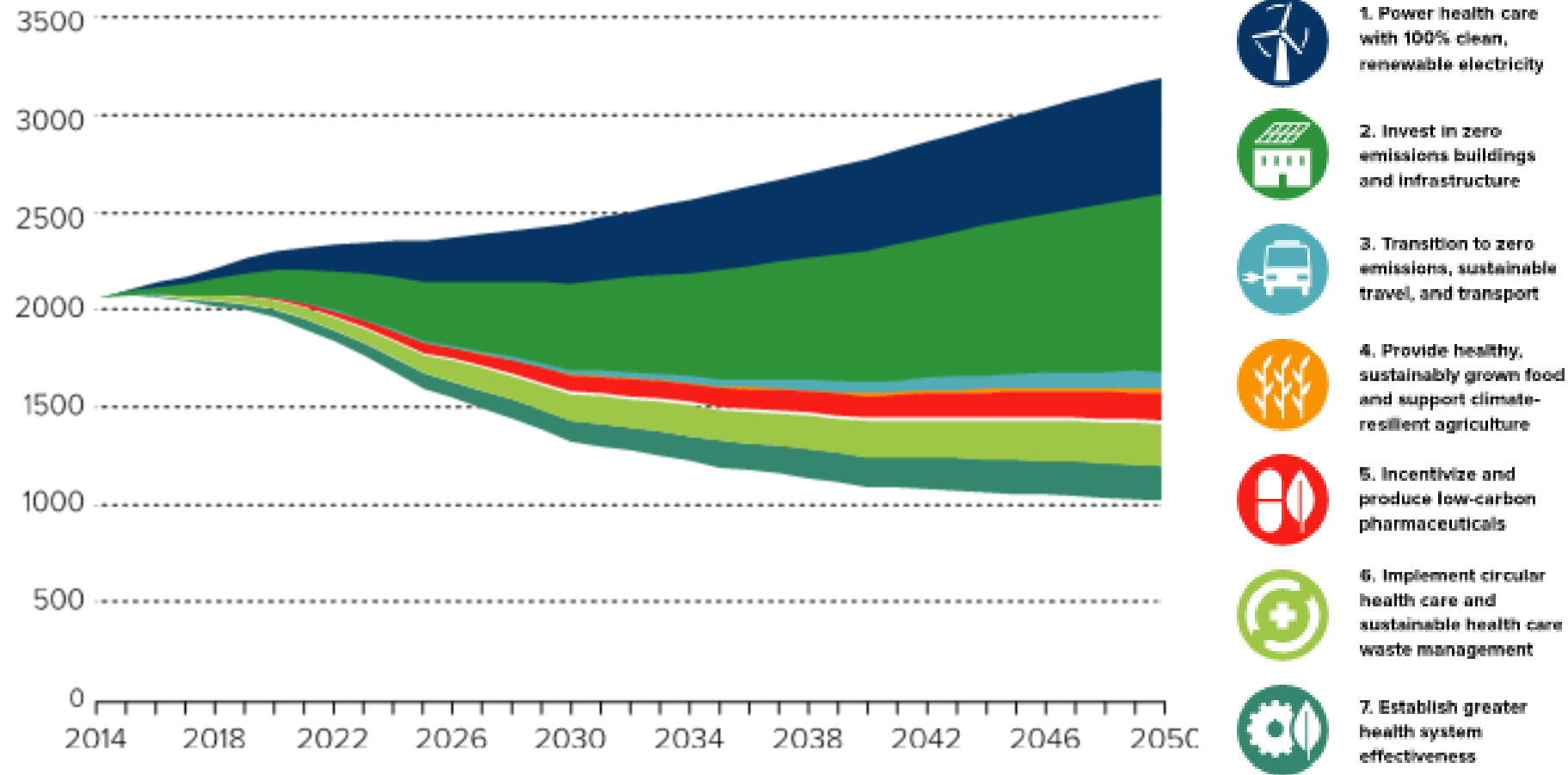
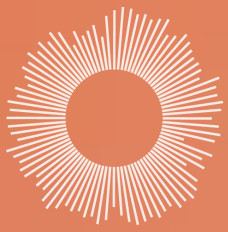
2.1)	Organizational Maturity
2.2)	Environmental And Social Health Drivers Assessment
2.3)	Health Vulnerability Assessment
2.4)	Health Equity: Delivery
2.5)	Addressing The Social Determinants Of Health



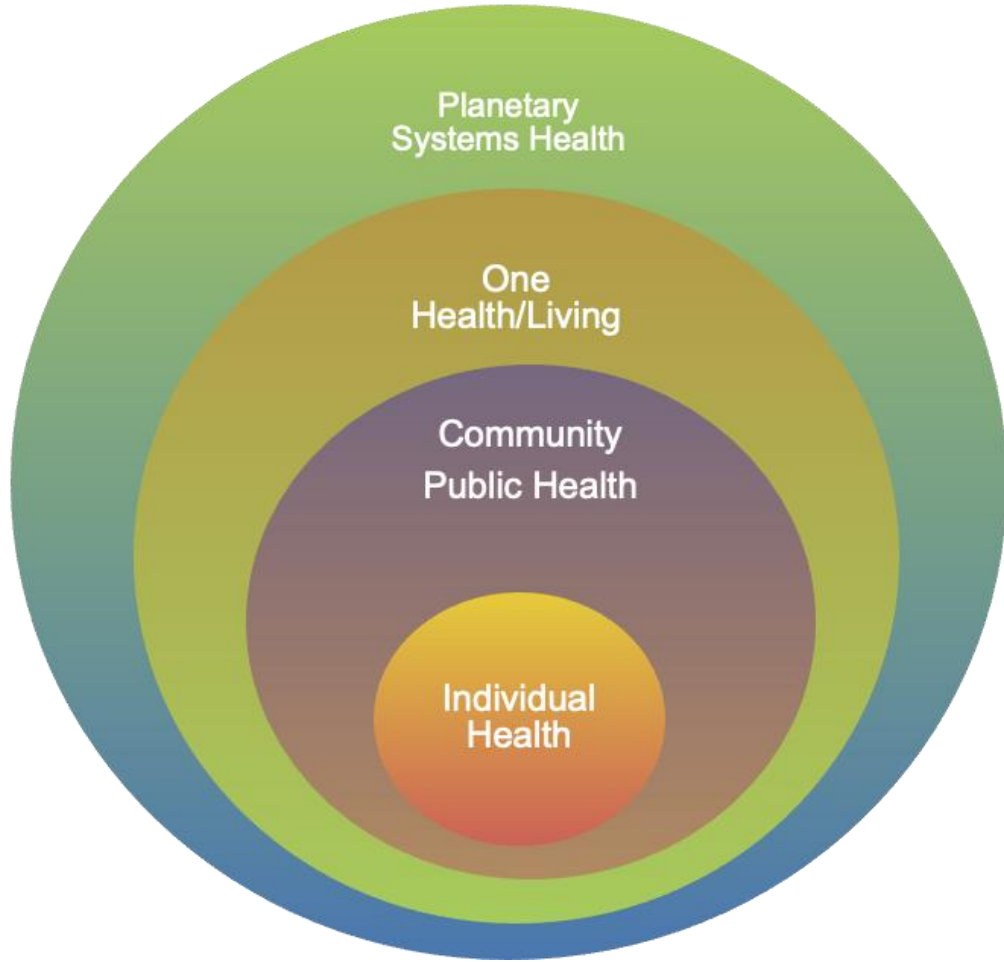
## 3) Leadership & Governance

3.1)	Organizational Maturity
3.2)	Governance
3.3)	(ESG) Tracking And Reporting Processes
3.4)	Employee Engagement And Empowerment
3.5)	Stakeholders Engagement And Collaboration

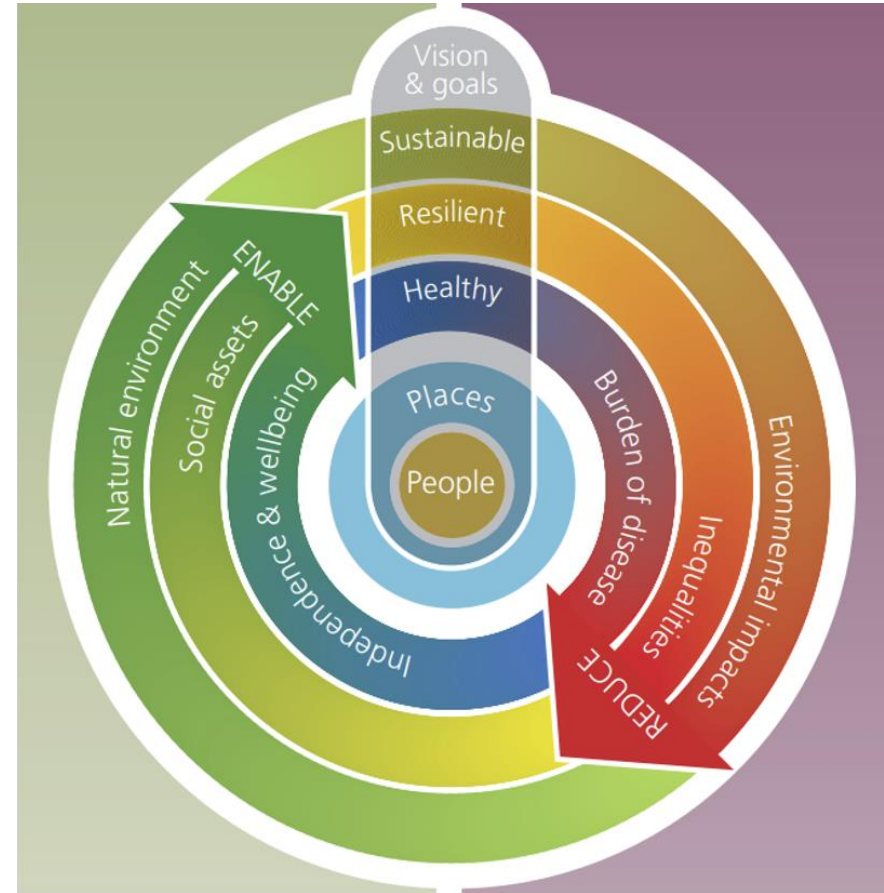
# Global Road Map to zero: High-impact actions



# It is all about health!



Derived from Forbes 2021:  
What is Planetary Health?



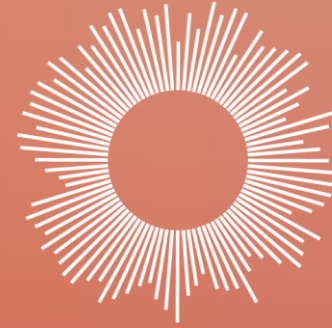
NHS Sustainable Development Unit 2015:  
Sustainable Development Strategy

# Challenges and Opportunities

- ❑ Size of the transformation task
- ❑ Unequal world
  
- ✓ It is about health
  - ✓ For people
  - ✓ For communities
  - ✓ For the planet







Geneva  
Sustainability  
Centre



[genevasustainabilitycentre.org](https://genevasustainabilitycentre.org)



[geneva-sustainability-centre](https://www.linkedin.com/company/geneva-sustainability-centre)



[SustainGVA](https://twitter.com/SustainGVA)



[ihf.gsc](https://www.facebook.com/ihf.gsc)